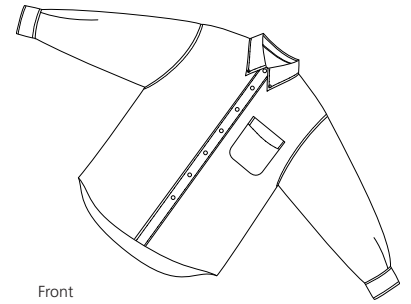
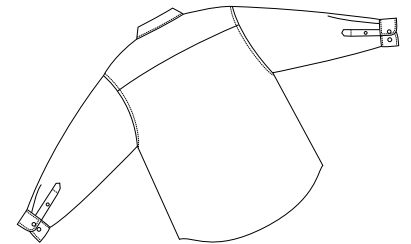


Heavyweight Denim Shirt

PORT AUTHORITY®



Front



Back

S100

- * 7.5-ounce * 100% cotton denim * Stonewashed * Double and triple-needle stitched
- * Tuck-in tail * Button-down collar * Button-through sleeve plackets * Adjustable cuffs
- * Horn tone buttons * Patch pocket

Care Instructions:

Machine wash cold with like colors.
Do not bleach. Do not dry clean.
Tumble dry low.
Warm iron if necessary

Finished Measurements in Inches

Size	XS	S	M	L	XL	2X	3X	4X
Width	20	21.5	23	24.5	26	27.5	29	30.5
Length	26.5	28.5	32	32.5	34	34.5	35.5	36
Sleeve	31	32.5	34.5	35.5	37	38	39	40
Collar	15.5	16	16.5	17	17.5	18	18.5	19
Pocket	5x5.5	5x5.5	5.25x6	5.25x6	5.25x6	5.25x6	5.5x6.25	5.5x6.25

Width measured 1" below arm hole. Length from measured back neck seam to hem.
Sleeve length measured from center back seam to hem. Collar measured by circumference. Pocket WxH.

Colors

 Dark Blue Stonewashed

Please Note:

Colors shown are approximate and for reference only. No PMS match is possible on a heathered color garment. For exact match, returnable samples and grommeted samples are available.

*Due to a special washing process, colors may vary

Color Chart

Color	Dark Blue Stonewashed
Textile PMS	No Match
General PMS	No Match