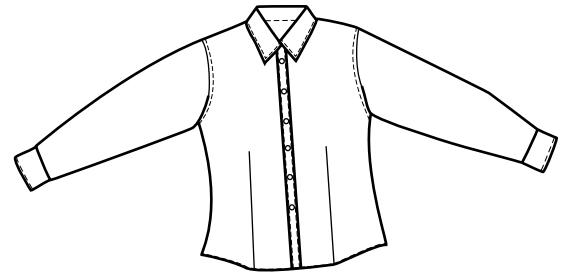
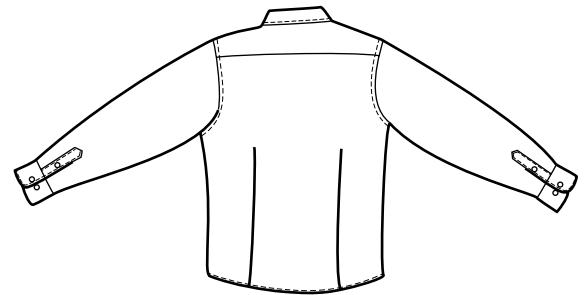




**RED HOUSE**  
THE WINE COUNTRY LIFESTYLE



Front



Back

# LADIES NON-IRON BUTTON-DOWN SHIRT

## RH42

A classic pattern with no need for the old-fashioned iron. Our button-down shirts shrug off wrinkles, but unlike the average non-iron shirts, ours are specially treated to stay exceptionally soft.



- 100% two-ply cotton
- 80-doubles yarn
- Open collar
- Single-needle tailoring
- Front and back darts
- Engraved Red House buttons



### Care Instructions:

Machine wash warm with like colors.  
Do not bleach. Tumble dry low.  
Remove promptly and hang.

Finished Measurements in Inches								
Size	XS	S	M	L	XL	XXL	Plus 1X	Plus 2X
Chest	17	19	21	23	25	26.5	28	30.5
Body	25	26	27	28	29	30.25	31.25	32.5
Sleeve	31.25	32	32.5	33	33.5	33.825	34.25	35
Shoulder	15.5	16.25	17	18.25	19	20.125	21.25	22.24
Dart	4.5	4.5	4.5	4.75	4.75	4.75	5	5

Colors	
	Fine Line-Blue/White
	Fine Line-Green/White

### Please Note:

Colors shown are approximate and for reference only. For closest match see PMS colors, or for exact match, returnable samples and grommited samples are available.

Chest measured 1" under arm hole. Body length measured from center back neck seam to hem.  
Sleeve measured from shoulder to cuff. Shoulder width measured from arm hole to arm hole.  
Collar measured by circumference.

Color Chart		
Colors	Blue/White	Green/White
Textile PMS	No Match	No Match
General PMS	657C	557C
Madeira (Tonal Emb)	No Match	No Match